



Oil Transfer Equipment

Model: IBC Oil Tank Station



DOTIBCKIT

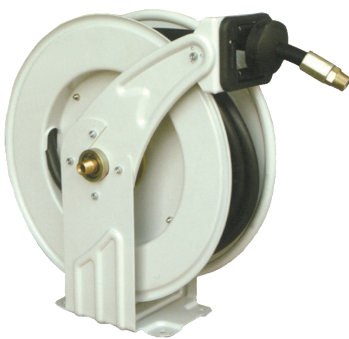
DOT IBCKIT - IBC OIL TANK STATION

- 3:1 air operated pump
- 1000 litre IBC tank (optional)
- 15 metre oil reel with ½" hose
- Digital nozzle and drip tray
- Dimensions (L)162cm x (W)119cm x (H)91cm

Breakdown of kit

- DOT IBC tank (optional)
- DIT11701033 pump
- DITIM860154 reel
- DIT11781501 metered nozzle
- DITIDT10001 drip tray
- DIT119808101 side bracket
- DIT119808102 top bracket
- DIT11763405 hose connection assembly
- DITIET10001 top extension connection
- DITIET10200 extension tube

IBC KIT Includes:



DITIM860154

Heavy Duty Hose Reel

- Working pressure 2000psi
- Dual pedestal steel hose reel
- Hose length: 15 metres



DITI1781501

Digital Oil Nozzle

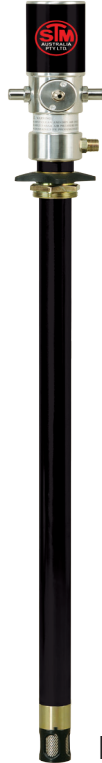
- Digital nozzle with rigid spout
- Handles motor oil, gear oil, ATF, etc.
- Meter fluid range: 1-35 litres per minute

Note: Items shown with the models listed above can be altered to suit your needs. Please contact STM for options and pricing.



Oil Transfer Equipment

Model: IBC Oil Tank Station



3:1 Air Operated Oil Pump

- Handles motor oil, synthetic oil, hydraulic oil, gear oil and ATF
- Suitable for oils up to SAE 150
- Maximum flow rate of 12 litres per minute
- Suitable for pumping through medium sized hose reel systems when one or two hose reels are required

DIT11701033



DIT119808102
IBC Top Bracket

Universal Bracket

- Adjustable mounting bracket suitable for IBC and Uni tanks
- For assembly of hose reel and drip tray



DIT119808101
Side Bracket