

HOSE REEL MANUAL



EN808/EN809 Series

Read the following precautions and instruction before you begin assembly or using. Failure to comply with these instructions could result in personal injury or property damage. Keep these instructions in a convenient location for future reference.

Hose Reel Safety Precautions

Make sure incoming line pressure does not exceed rated operating pressure for your model hose reel. Use proper eye protection when assembling and using the hose reel. Assemble the hose reel on a clean workbench. Use soap and water when checking for leaks. Keep children away from the works area.

Warning:

Exposure of skin directly to pressurized air, or fluid could result in severe bodily injury.

Installation of Reel

- 1) For overhead ceiling mounting: Install reels at least 10 feet above the floor.
- 2) If the reel you have purchased does not have hose included, you will need to purchase and attach. Refer to Specifications on box to determine appropriate hose size and length.
- 3) You will need to purchase appropriate hardware for mounting your new reel.

The reel base has four 1/2" (or 12.7mm) drilled holes for mounting on suitable flat surface. **Figure 2** is a template showing the correct location of the 4 mounting holes in the base.

The reel is supplied with a hose guide roller bracket. The bracket position may be changed depending on the reel mounting position. Figure 2 shows Typical Mounting Positions. To adjust the hose guide arm, remove screws, and rotate guide band, and then tighten the screws.

Using the four holes in the base, mount the reel in the desired location. Be sure to use appropriate hardware and tighten securely.

Apply teflon tape or pipe sealant to supply line threads, attach to reel inlet and tighten. The other end of incoming line can now be connected to desired supply source.

Note:

To avoid damage to the swivel, use a wrench to support the swivel fitting while tightening the hose.

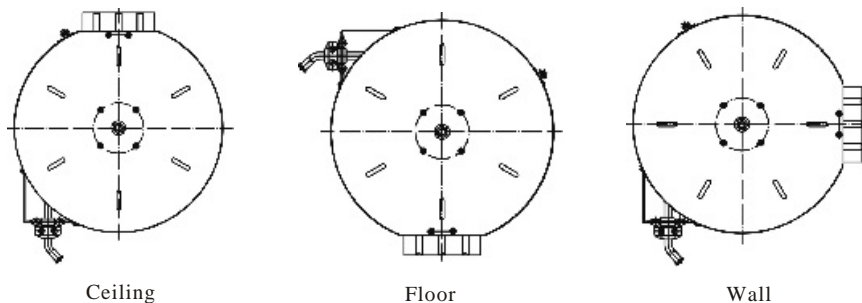


Figure 1

Operation:

Check reel for correct operation by slowly pulling out the hose. A clicking noise will be heard every half revolution of the drum.

To latch the reel, pull out the hose and allow it to retract after hearing the first second or third click.

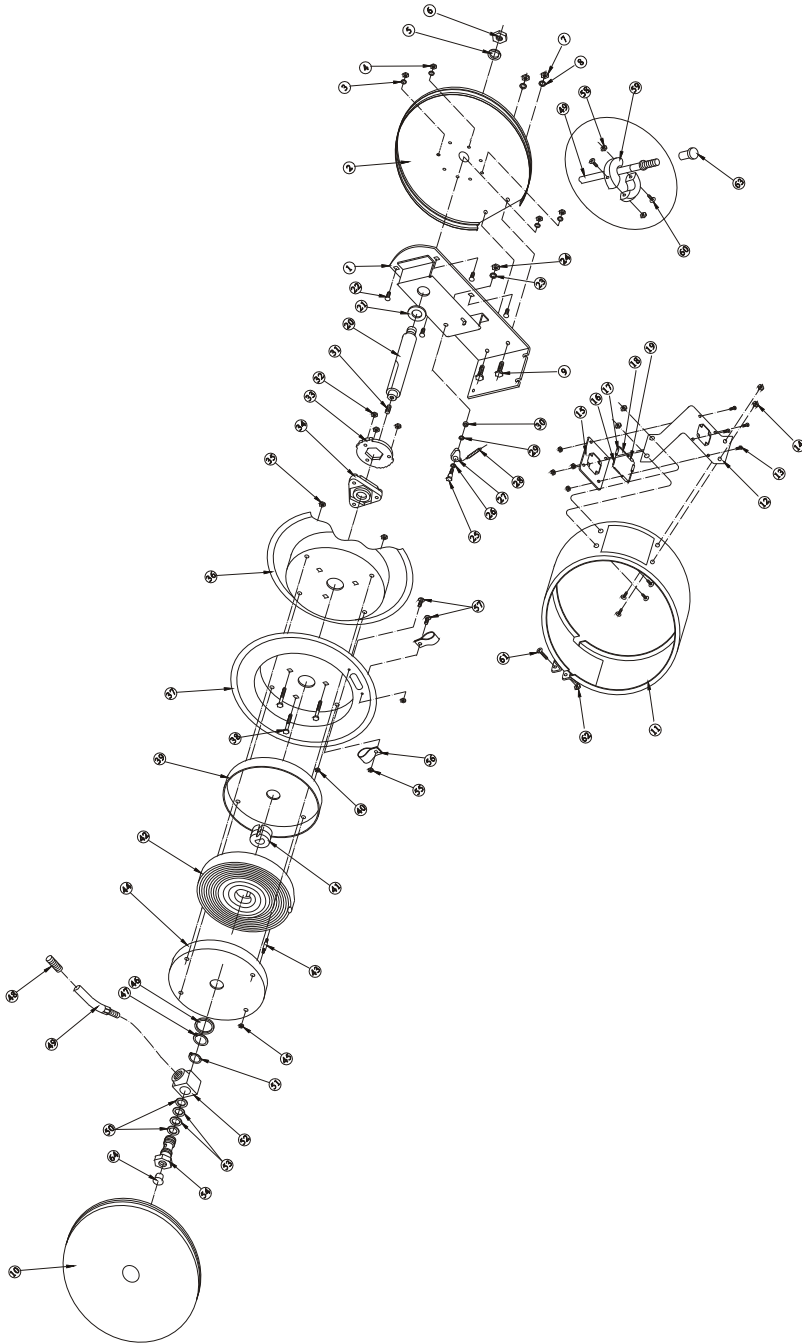
To unlatch, slowly pull out the hose until the clicking noise stops and rests against the hose guide.

Note: To avoid damage to the reel, always hold on to the hose while it is rewinding.

Periodically check the hose condition for wear or damage, and check the swivel fitting for leakage.

Replace any worn, damaged, or leaking parts.

En808 Diagram

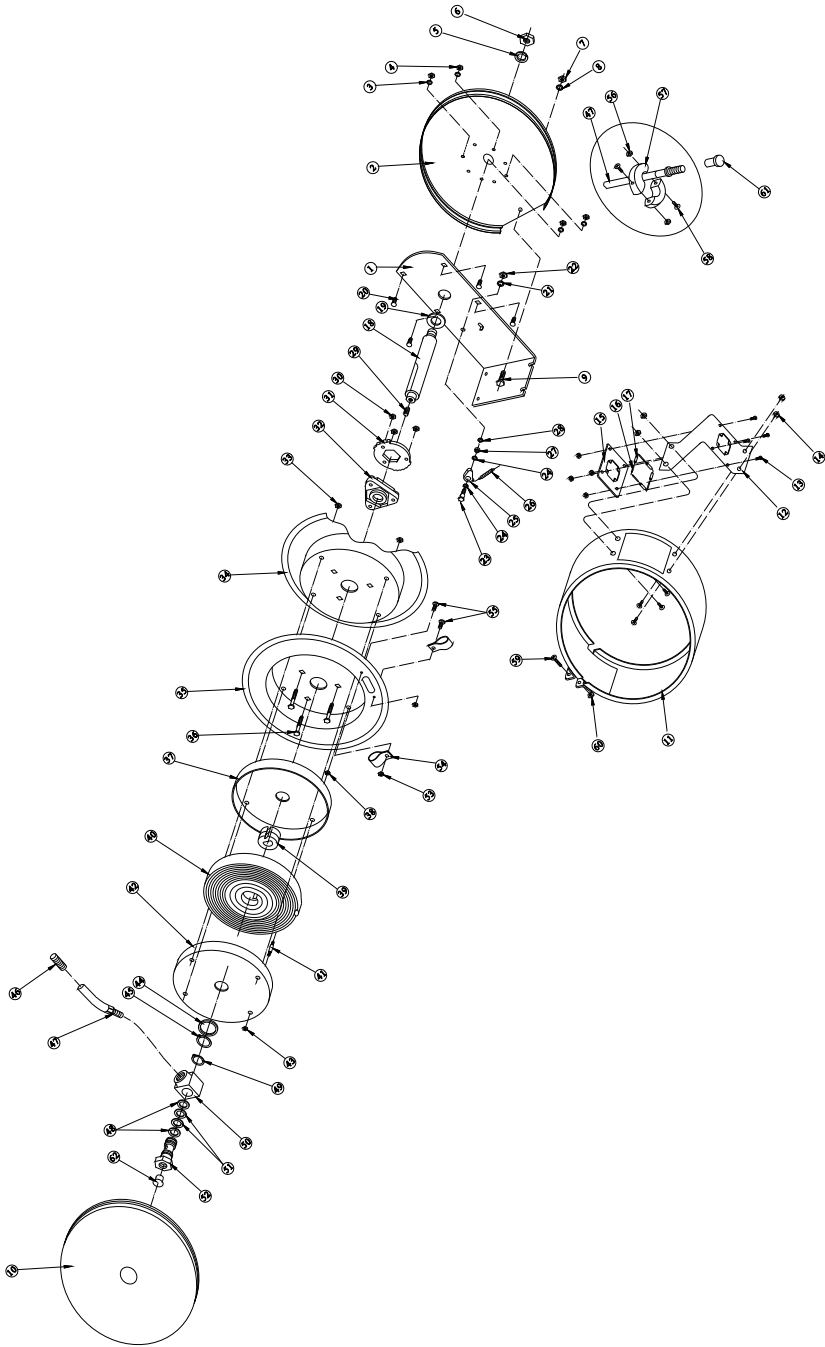


En808 Part List

Part#	Description	Q'ty
1	Base	1
2	Flange	1
3	Washer	4
4	Nut	4
5	Retainer	1
6	Nut	1
7	Nut	2
8	Washer	2
9	Bolt	2
10	Flange	1
11	Cover	1
12	Guide plate	1
13	Screw	8
14	Nut	8
15	Guide Sub-plate	1
16	Roller Axler	2
17	Roller	2
18	Roller Axler	2
19	Roller	2
20	Shaft	1
21	Washer	1
22	Bolt	4
23	Washer	1
24	Nut	1
25	Bolt	1
26	Washer	2
27	Locking Arm	1
28	Spring Dog	1
29	Retainer	1
30	Washer	1
31	Stud	1
32	Nut	3

Part#	Description	Q'ty
33	Locking Ring	1
34	Assembly Hub Bearing	1
35	Bolt	8
36	Drum	1
37	Drum	1
38	Bolt	3
39	Spring Drum	1
40	Nut	4
41	Spring Core	1
42	Spring	1
43	Bolt	4
44	Spring Drum	1
45	Nut	8
46	Washer	1
47	Retainer	1
48	Hose Protection Spring	1
49	Hose	1
50	Retainer	2
51	Retainer	1
52	Swivel Body	1
53	O-ring	2
54	Swivel Spool	1
55	Nut	2
56	Clamp	2
57	Screw	2
58	Nut	2
59	Bumper Block	2
60	Screw	2
61	Screw	2
62	Nut	2
63	Protection Cover	1
64	Protection Cover	1

En809 Part List



En809 Part List

Part#	Description	Q'ty
1	Base	1
2	Flange	1
3	Washer	1
4	Nut	1
5	Retainer	1
6	Nut	1
7	Nut	1
8	Washer	1
9	Bolt	1
10	Flange	1
11	Cover	1
12	Guide plate	1
13	Screw	8
14	Nut	8
15	Guide Sub-plate	1
16	Roller Axler	4
17	Roller	4
18	Shaft	1
19	Washer	1
20	Bolt	4
21	Washer	1
22	Nut	1
23	Bolt	1
24	Washer	2
25	Locking Arm	1
26	Spring Dog	1
27	Retainer	1
28	Washer	1
29	Stud	1
30	Nut	3
31	Locking Ring	1

Part#	Description	Q'ty
32	Assembly	1
33	Bolt	8
34	Drum	1
35	Drum	1
36	Bolt	3
37	Spring Drum	1
38	Nut	4
39	Spring Core	1
40	Spring	1
41	Bolt	4
42	Spring Drum	1
43	Nut	8
44	Washer	1
45	Retainer	1
46	Hose Protection Spring	1
47	Hose	1
48	Retainer	2
49	Retainer	1
50	Swivel Body	1
51	O-ring	2
52	Swivel Spool	1
53	Nut	2
54	Clamp	2
55	Screw	2
56	Nut	2
57	Bumper Block	2
58	Screw	2
59	Screw	2
60	Nut	2
61	Protection Cover	1
62	Protection Cover	1

Adjustment of Spring Tension

Remove the cover and flange.

Pull out approximately of 1 or 2m of hose and allow the drum to latch.

Remove hose stopper from hose, and feed hose back through guide.

Wrap the pulled hose one time around the drum to increase tension or un-warp hose one time from drum to decrease tension.

Re-insert hose through guide, and install stopper onto hose end.

Install the cover and flange.

Unlatch the drum and check tension. Pull hose from reel, and adjust stopper position if necessary.

Installation and Replacement of Hose

Turn off supply to reel.

Remove the cover and flange.

Pull out all the old hose and lock the reel in this position.

Caution: Make sure reel drum is securely locked and cannot rotate back.

Remove two hose clamps from hose.

Carefully disconnect hose from swivel joint on side of reel, or male fitting in axle center and remove old hose.

Feed new hose through guide and opening in drum, and connect to swivel. Re-install two hose clamps, on inside and outside of drum flange. Install stopper on other end of hose in the same position as before.

Re-tension the reel if needed.

Install the cover the flange.

Carefully release the drum latch, and slowly allow the hose to wind onto the reel.

Replacement of Swivel Seal

Turn off the disconnect supply line from swivel inlet.

Remove the cover and flange.

Remove swivel assembly from reel axle.

\Remove circlip from swivel, and take apart. Note: You may want to remove swivel from reel hose end, but this is not necessary unless a new swivel is being installed.

Replace the seals and reassemble swivel.

Use Teflon type or thread sealant on swivel thread fitting, reconnect the swivel thread fitting with axle.

Install the cover and flange.

Re-connect inlet supply line.

Spring Canister Warning

If the rewind spring fails for any reason: For safety reason the manufacturer strongly recommends the replacement of the spring canister be carried out by a professional mechanic.

Limited Warranty

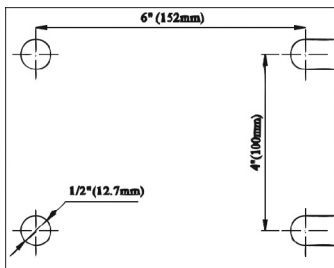
The manufacturer warrants this hose reel against defects in material and craftsmanship. For period of 12 months from date of purchase.

Hose, if supplied with reel, O-rings, plastic rollers and rubber stopper are deemed to be normal wear items; not warranted.

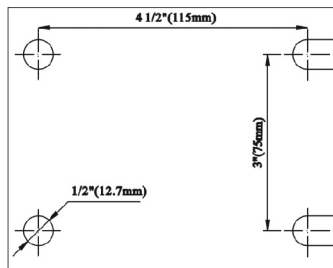
Manufacturer's liability is limited to replacement or repair of defective material within the warranty period, when returned freight prepaid to the distributor or their designated service depot.

The warranty does not cover damage caused by accident, misuse or faulty installation.

The reel must be installed and maintained in compliance with the instructions.



En808 series



En809 Series